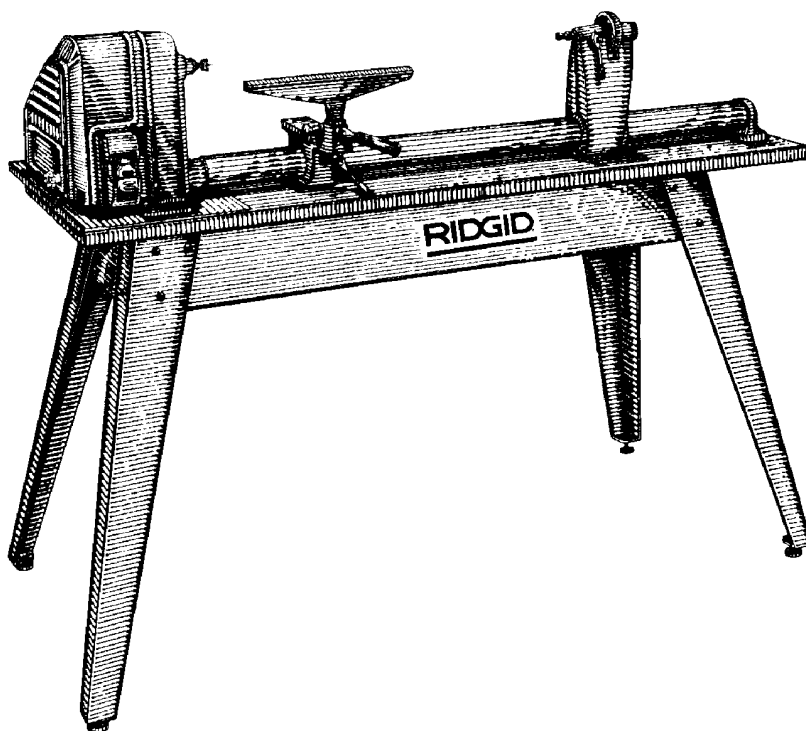


# WL1200 OWNER'S MANUAL



## 12 INCH WOOD TURNING LATHE

**Call Us 1<sup>st</sup>**

For any questions about:

- Operation
- Warranty (See back cover)
- Technical Assistance
- Repair Parts

*Please have your Model Number and  
Serial Number on hand when calling.*

1-800-4-RIDGID

**RIDGID** Parts.com

POWER TOOL PARTS  
& ACCESSORIES

### **For Your Safety:**

**Read all instructions carefully**

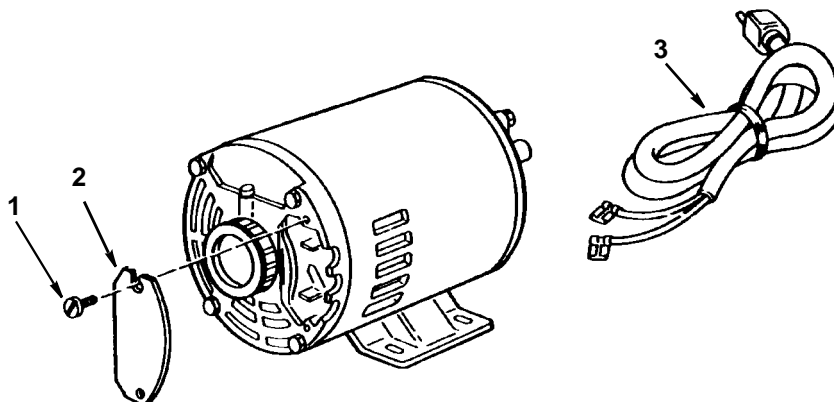
**Save this manual for future reference**

### RIDGID 12" Wood Lathe

Model No. WL12000

Figure 1

**NOTE:** Any attempt to repair this motor may create a hazard unless repair is done by qualified service technician. Repair service is available at an Authorized Service Center.

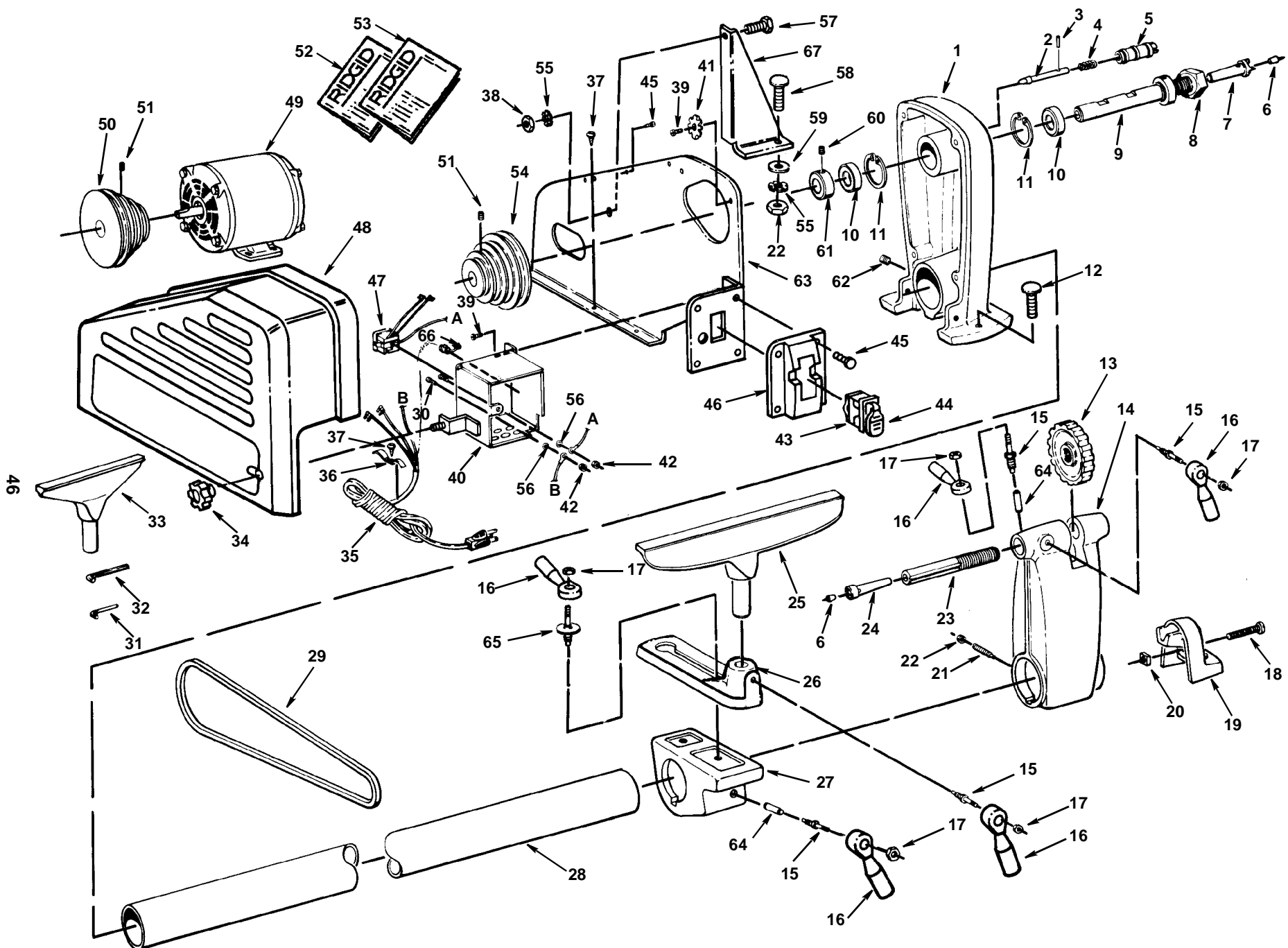


**Always order by Part Number -- Not by Key Number**

Key No.	Part No.	Description
1	805509-2	* Screw, Pan Hd. 8-32 x 3/8
2	64088	Cover, Terminal
3	305919-89	Cord with Plug

\* Standard Hardware Item - May be purchased locally

## Figure 2



# RIDGID 12" Wood-Turning Lathe Model No. WL12000

Figure 2

Always order by Part Number -- Not by Key Number

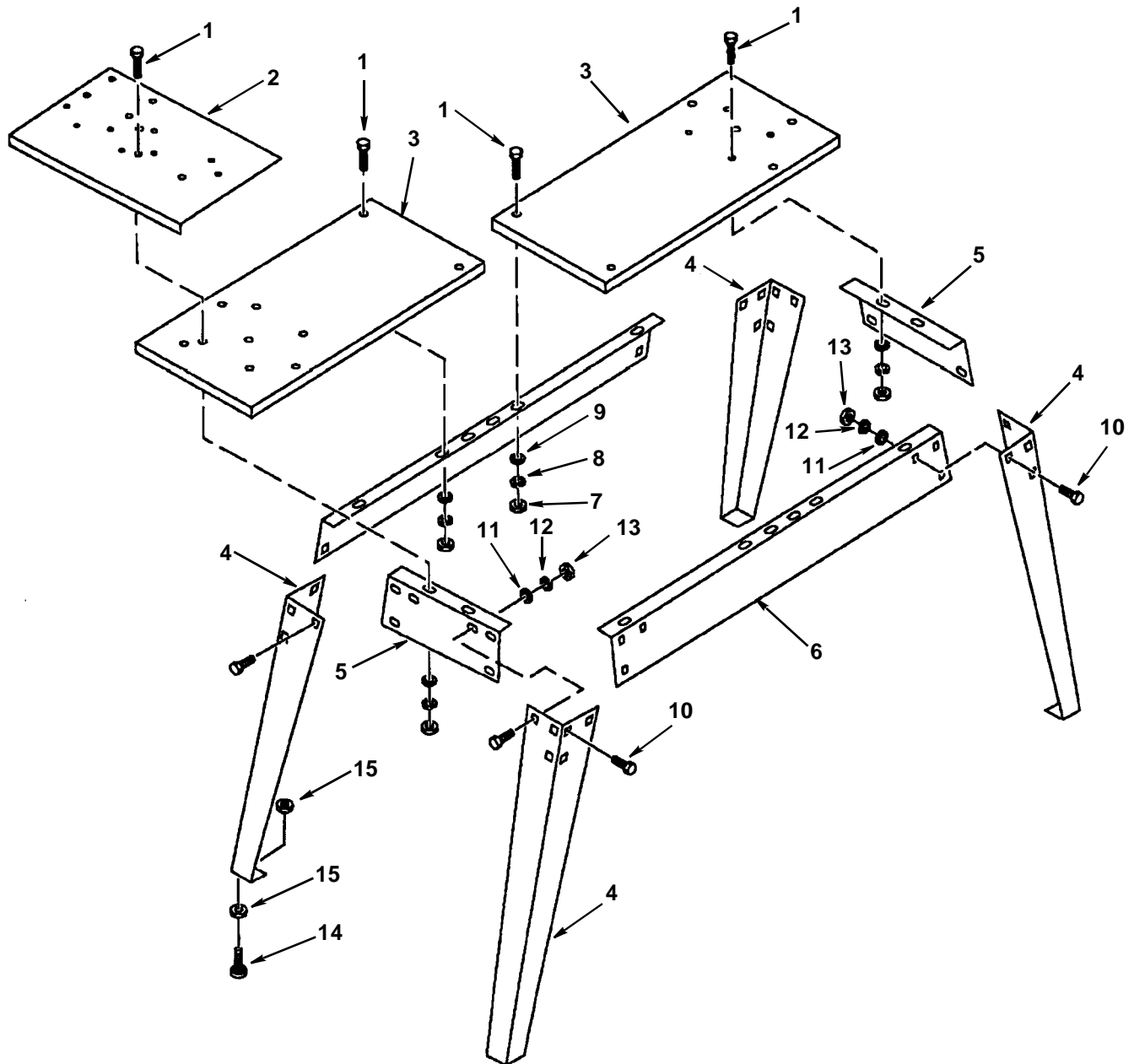
Key No.	Part No.	Description
1	826550	Headstock
2	826564	Plunger
3	813249-54	Pin Roll 2.5-12
4	826563	Spring
5	826562	Housing Plunger
6	826584	Center Point
7	826582	Center Spur
8	816989	Nut Hex 3/4-16
9	826553	Spindle
10	826552	Bearing Ball
11	826551	Ring Retaining
12	820377-2	Bolt Carriage M6 x 1.0-60
13	826560	Wheel Hand
14	828269	Housing Tailstock
15	826591	Stud nut
16	826592	Lever
17	817449-1	Nut Lock M6 x 1.0
18	826587	* Screw Pan Hd. M8 x 1.25-45
19	826577	Foot Rear
20	820258-4	Nut Sq. M8 x 1.25
21	828180	Screw SI Set M8 x 1.25-31.75
22	820326-7	* Nut Hex M8 x 1.25
23	826559	Spindle Tailstock
24	826583	Center Cup
25	826574	Rest 12" Tool
26	826575	Holder Tool Rest
27	826576	Clamp Support
28	826571	Tube Asm
29	808644	* Belt V 1/2 x 37
30	816743-4	* Screw Pan Cr M4 x 0.7-8
31	813317-7	Wrench Hex L M4
32	813317-8	Wrench Hex L M5
33	826570	Rest 6" Tool
34	826601	Knob Guard

Key No.	Part No.	Description
35	826607	Cord w/Plug
36	63418	Clamp Cord
37	813312-6	* Screw Pan Hd M4 x 0.7-6
38	820236-6	Nut Hex M6 x 1.0
39	826586	* Screw Pan Hd Ty T M5 x 0.8-12
40	826606	Box Junction
41	813314-8	* Lockwasher Ext M5
42	824026-4	* Nut Hex M4 x 0.7
43	826123	Switch Locking
44	826122	† AC1000 Key Switch
45	816743-4	* Screw Pan Hd Ty T M4 x .7-8
46	826396	Bezel Switch
47	167165-2	Outlet
48	826599	Guard Asm.
49	826618	Motor
50	826556	Pulley 4 Step
51	817391-2	* Screw Soc Set M8 x 1.25-8
52	SP6169	Owners Manual
53	SP6170	Owners Manual - Spanish/French
54	826572	Pulley 4 Step
55	818826-6	* Lockwasher M6
56	813163-6	* Lockwasher Int M4
57	817390-5	* Screw Hex Hd M6 x 1.0-12
58	820377-1	Bolt Cup Hd Sq Neck M6 x 1.0-45
59	820238-4	* Washer M6
60	817391-2	* Screw Soc Set M8 x 1.25-8
61	826554	Collar
62	817391	* Screw Hex Soc Set M10 x 1.5-12
63	826605	Plate Guard
64	826590	Shoe Lock
65	826593	Stud Nut
66	169123-11	Relief Strain
67	826569	Bracket Plate

\* Standard Hardware Item - May Be Purchased Locally

† This item is a RIDGID accessory available at Home-Depot

## RIDGID 12" Wood-Turning Lathe Model No. WL12000 Figure 3



## RIDGID 12" Wood-Turning Lathe

Model No. WL12000

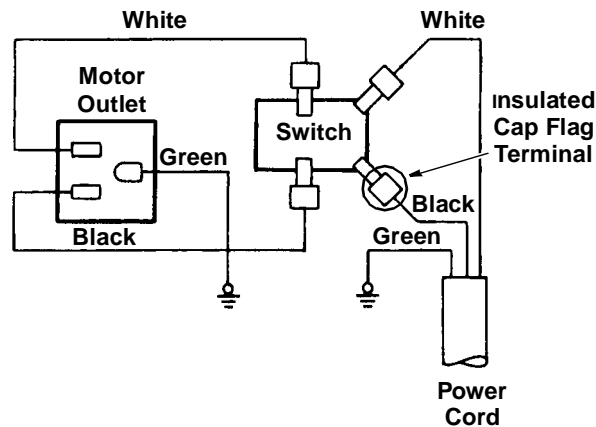
### Figure 3

Always order by Part Number -- Not by Key Number

Key No	Part No.	Description
1	820377-1	Bolt Rd. Hd. Sq. Neck M6 x 1.0-45
2	826579	Plate Support
3	826619	Board Wood Lathe
4	826890	Leg
5	826581	Support End
6	826580	Support Side
7	817449-1	* Nut Hex M6 x 1.0
8	818826-6	* Lockwasher M6
9	820238-4	* Washer M6
10	821103	Bolt Rd. Hd. Sq. Neck M8 x 1.25-16
11	821063-2	* Washer M8 x 16 x 1.6
12	813163-12	* Lockwasher M8
13	817551	* Nut Hex M8
14	803835-1	Foot Leveling
15	118645	* Nut Hex Jam 3/8-16

\* Standard hardware item - may be purchased locally.

## Wiring Diagram



## Maintenance

### Maintenance

**WARNING: For Your Own Safety, Turn Switch "OFF" And Remove Plug From Power Source Outlet Before Maintaining Or Lubricating Your Lathe.**

Apply a coat of automobile-type wax to the lathe bed to help the tool rest and tailstock move freely.

Have power cord replaced if it becomes worn or frayed.

### Lubrication

**Periodically lubricate the ram in the tailstock with No. 20 or No. 30 engine oil.**

### Motor Maintenance And Lubrication

1. The bearings, in both end shields of the motor, have been lubricated at the factory with correct lubricant. No other part of the motor requires lubrication.
2. Re-lubricate motor bearings in accordance with the instructions on the nameplate. Be sure to wipe off dirt or grit if present around oil hole caps to prevent any possibility of foreign material contaminating the oil wicks that supply the bearings with oil. Use a good

grade of medium weight mineral oil, such as automobile engine oil SAE 20.

3. If disassembly of the motor is necessary, it should be returned to your nearest RIDGID retail store in order to prevent voiding the guarantee.

**NOTE:** The speed of this motor cannot be regulated or changed.

4. Every effort should be made to prevent foreign material from entering the motor. When operated under conditions likely to permit accumulations of dust, dirt, or waste within the motor, a visual inspection should be made at frequent intervals. Accumulations of dry dust can usually be blown out successfully.

**NOTE:** Motors used on woodworking tools are particularly susceptible to the accumulation of sawdust and wood chips and should be blown out or "vacuumed" frequently to prevent interference with normal motor ventilation and proper operation of the centrifugally operated starting switch.